

# CHEWATEC VDS III

---

EXCELLENT QUALITY – EXCELLENT PERFORMANCE



*Motor-driven diaphragm metering pump*

*VDS III – Standard metering pumps*

# CHEWATEC VDS III

CHEWATEC VDS III motor driven diaphragm dosing pump is available with 4 gear ratios, 3 dosing head sizes and 2 dosing head materials well adapted to basic dosing tasks. It is equipped with a three-phase motor. The delivery rate can be adjusted in 1% increments via the stroke length by means of a self-locking knob.

Customized versions are possible on request.

## Features

- Stroke length 4 mm or 6 mm
- Stroke length adjustment range 0 –100%
- 2 gear reduction ratios  
3 metering head sizes  
2 metering head materials as standard (PP, PVC)
- Flexible adjustment of delivery rate via stroke length in 0-100% increments
- Robust aluminum housing
- Drive can be supplied with three-phase standard motor

## Areas of application

- Chemical metering in drinking water, cooling water and waste water circuits
- Metering of additives, flocculants, etc.

## Technical Information

- **Capacity range:** 65 – 690 l/h
- Backpressure: 5 bar
- IP protection: IP65
- Stroke length: 0 – 100%  
(4/6 mm)
- Material: PP, PVC

## Advantages

- Good suction capacity – controlled metering stroke and consistently precise metering
- High process quality: metering reproducibility better than  $\pm 2\%$  in the stroke length adjustment range from 30 % to 100%
- Flexible adjustment of delivery rate
- A variety of configurations that enable the pump to be ideally matched to the respective metering task

## MATERIAL VERSIONS

Type	Dosing Head	Suction/Discharge Valve	Seals	Balls	Ball seat
PCE	PVC	PVC	EPDM	Borosilicate glass	PVC
PCB	PVC	PVC	FPM	Borosilicate glass	PVC
PPE	PP	PP	EPDM	Borosilicate glass	PP
PPB	PP	PP	FPM	Borosilicate glass	PP

# CHEWATEC VDS III

## CHEWATEC ACCESSORIES



### Foot Valve

With suction filter and non-return ball for connecting to suction line



### Injection valve

With spring-loaded non-return ball for metering into open and closed systems



### Injection lance

For metering into large pipes, when handling crystallizing media



### Suction lance

With foot valve and level switch, for non-returnable containers or metering tanks.

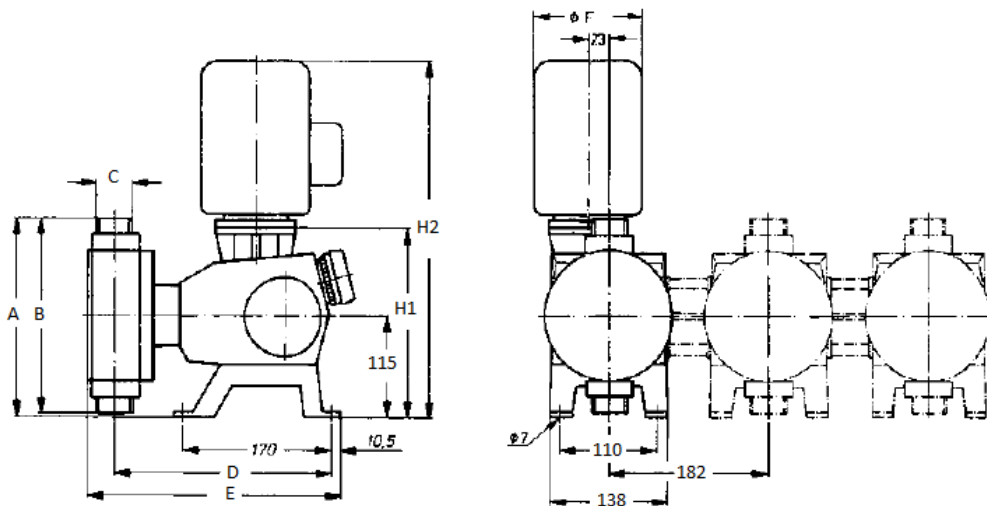
## CAPACITY DATA

Type	With 1500 rpm motor at 50 Hz Pump Capacity at max. back pressure				Suction lift mW	Perm. prepressure suction side bar	Connection suction/discharge side G-DN	Type kW
	bar	l/h	ml/stroke	strokes/min				
10065	10	65	15	72	5	2,8	1 ¼ " - 20	0,18
10086	10	86	15	96	5	2,8	1 ¼ " - 20	0,18
10108	10	108	15	120	5	2,8	1 ¼ " - 20	0,18
10130	10	130	15	144	5	2,8	1 ¼ " - 20	0,18
10173	10	173	30	96	3	1,3	1 ¼ " - 20	0,37
10216	10	216	30	120	3	1,3	1 ¼ " - 20	0,37
10260	10	260	30	144	3	1,3	1 ¼ " - 20	0,37
10330	10	330	44,8	123	3	1,3	1 ¼ " - 20	0,37
09395	9	395	44,8	144	3	1,3	1 ¼ " - 20	0,37
05440	5	441	61,3	120	2	0,5	1 ½ " - 25	0,37
05530	5	530	61,3	144	2	0,5	1 ½ " - 25	0,37
03662	3	662	89,7	123	2	0,5	1 ¼ " - 20	0,37
03790	3	790	89,7	147	2	0,5	1 ¼ " - 20	0,37

# CHEWATEC VDS III

## INSTALLATION DIMENSIONS

Dimensions in mm



Type	Liquid end	Head diameter	Connector	A	B	C	D	E
12 bar	FM 130	145/76	DN20	224	217	R 1 ¼	266	313
10/9/7/6 bar	FM 260	145/104	DN20	224	217	R 1 ¼	266	313
5/4/3 bar	FM530	180/143	DN25	248	266	R 1 ¼	271	321
Rozmery výšky	Standard motor size 0.18 kW, mounting dia.: 90	1 – phase DC motor 0.37 kW, monting flange dia.: 140 a 160		Variable speed air cooled motor, Mounting flange dia.: 140, 0.37 kW / 0.75 kW		Drive with mounting flange		
H1	213	220	220	242				
H2	396	421	440 / 583					